

ARCHER Service Update

15 Oct 2014

Jason Beech-Brandt, *CRAY CoE*

Alan Simpson, *ARCHER CSE*

Liz Sim, *ARCHER SP*

EPSRC

NERC SCIENCE OF THE ENVIRONMENT



CRAY
THE SUPERCOMPUTER COMPANY

| **epcc** |

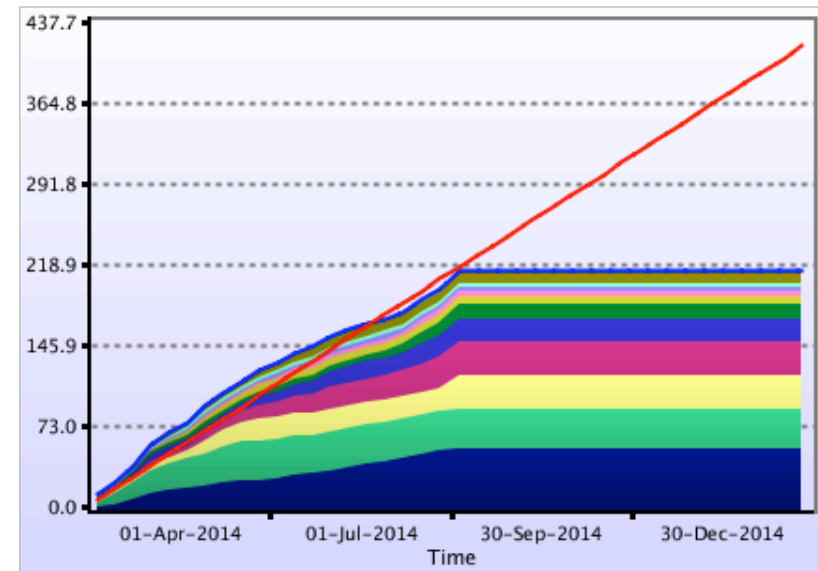
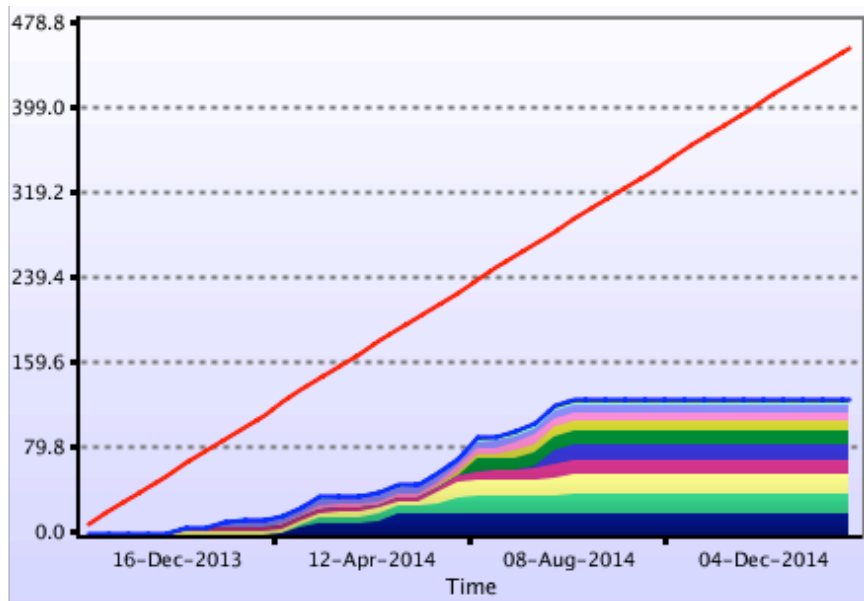


SP Service Improvements

- System Configuration
 - Debug Queue added
 - Reservations now available via SAFE
 - Budgets checked on job submission (prevents budget overspend)
- Communications and Reporting
 - Updated SAFE reports on utilisation and allocations
 - Primarily for Consortia and RAP
 - You Tube videos now available for SAFE common actions
 - 6-monthly indicative maintenance schedule now online
 - Module catalogue and history
 - Twitter feed and links to blog articles
- Novel Changes
 - ARCHER App for mobile devices available



Updated Utilisation Reports



SP Future Plans

- ARCHER Website
 - Refactoring ARCHER website
 - Addition of public-facing pages
 - Target completion Q4 2014
 - Further enhancements to User Documentation
- SAFE Changes
 - Add mechanism to SAFE to enable users to register publications
 - Report on power/memory usage of jobs
 - Regular usage reports emailed to PIs
 - Training course registration via SAFE



CRAY CoE Service Improvements

- Application engagement
 - Python in HPC
 - UM/n02 engagement (in collaboration with CSE)
 - Investigating occasional slowdown for some of their large climate simulations
 - Investigations into running Hadoop on ARCHER
 - Access to this framework provided through the Cray system “swan”
 - Support for eCSE project – CESM porting onto ARCHER
 - UKTC/SBLI: helping with performance of a coarray Fortran version of SBLI code
- Training/user visits
 - PRACE I/O optimisation workshop at Daresbury
 - Invited talk/demonstration on Reveal at the Multicore Challenge 2014 conference
 - CUG2014 – runner-up for best paper on power monitoring
 - Visit to the UKTC Workshop 2014
- Misc
 - Cray CoE for ARCHER webpage - <http://www.archer.ac.uk/community/craycoe>



CRAY CoE Future Activities

- Application engagement
 - Continuing engagement with n02/UM users to better understand their IO issues
 - Improve performance of the Coarray Fortran communication model in SBLI
 - Acceptance related activities for Phase 2 system
- Further user engagement/visits
 - CoE is giving an OpenACC tutorial at SC14
 - CoE has been invited to attend and speak at the Centre for Doctoral Training in Pervasive Parallelism kick-off and Industrial Engagement event
 - Reviewing proposals for the next eCSE round and attending review meeting
- Further Cray training events?
 - Bulk of training covered by CSE
 - Cray will contribute where there is added value for particular topics, e.g.,:
 - Cray Programming Environment updates
 - Programming for GPUs/OpenACC
 - PGAS



CSE Current Status

- Number of In-Depth technical queries has reduced compared to start of service
 - 46 resolved in Q3 (80 in Q2, 97 in Q1)
 - Users are becoming more familiar with the system; not as many requests for new software installations
 - Pushed more effort into proactive technical activities: investigations into getting best out of, for example, parallel IO or Python; functionality around power monitoring of user jobs
- High demand for training continues
 - Particularly for Software Carpentry, Introduction to HPC, Python
 - 22 training days in last quarter at 7 different locations
 - Training the trainers: trial in Sheffield



CSE Future Plans

- Development of a series of screencasts on common ARCHER tasks, e.g.:
 - Using profilers and debuggers
 - Understanding compiler optimisations
- Case studies for ARCHER public-facing web pages
- Training plans for 2015:
 - Joint ARCHER/DiRAC training event on Xeon Phi programming
 - Development of coordinated training programmes to develop UK HPC skill base
- Develop material to broaden ARCHER user base:
 - Aimed specifically at early career researchers in non-traditional HPC research communities
- Consortium Contacts to develop links with largest users in their communities

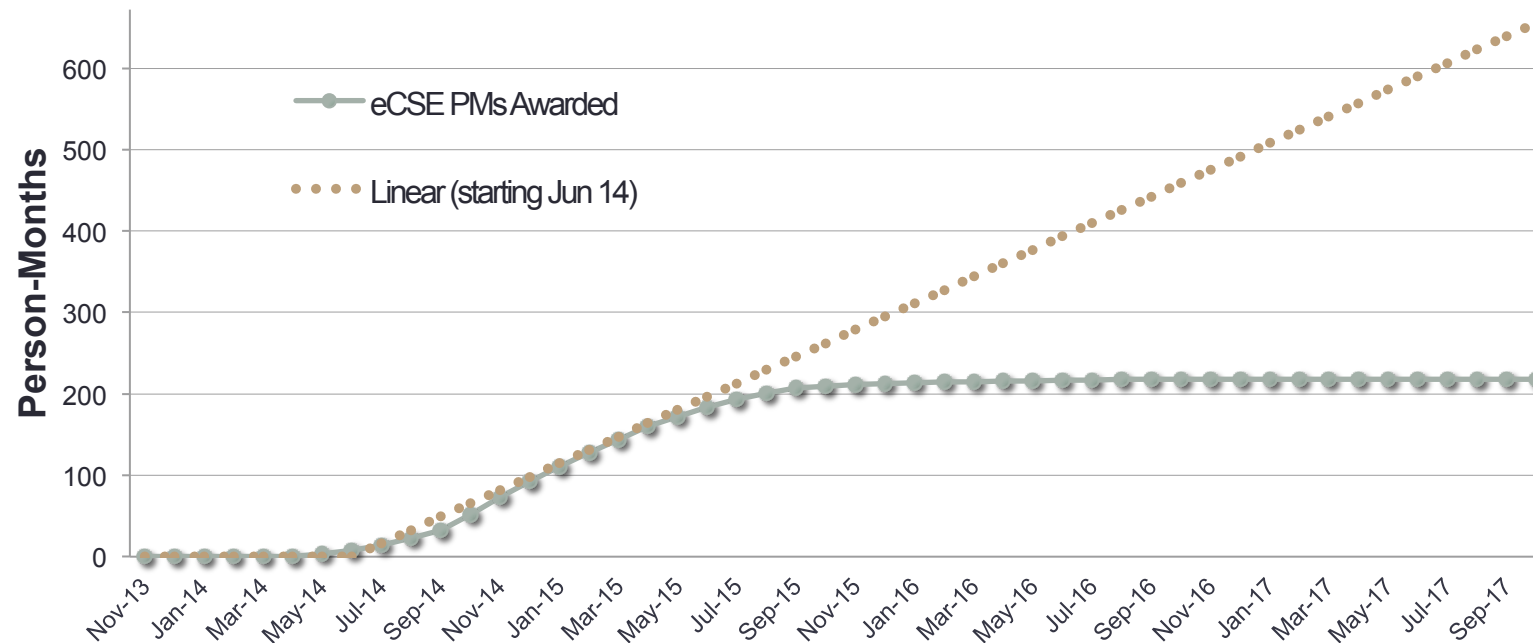


eCSE Current Status

- Continual improvement of process through feedback from applicants and panel members
 - Improved guidance for technical reviewers
 - Virtual tutorial and technical forum held on submission process
- Application and review now online through SAFE
- Templates for reports have been agreed
- Initial interim reports received for eCSE-01 projects
- High demand for eCSE funding continues:
 - eCSE-01: 19 proposals (funded: 14 projects, 132 months staff effort)
 - eCSE-02: 17 proposals (funded: 9 projects, 82 months staff effort)
 - eCSE-03: 16 proposals
- 214 PMs awarded (out of 672 PMs)



eCSE Effort Profile



- Linear trend shown for guidance (from June 14)
- Committed to at least 14 FTEs/672 PMs
 - More if funding permits



eCSE Future Plans

- Continue to gather feedback from applicants, panel and technical reviewers to improve processes and information
- SAFE development to streamline online application and review
- Remit of eCSE programme includes codes that do not currently utilise ARCHER – but will be able to on completion of an eCSE
 - Some proposals may be more suited to “institutional/regional eCSE”
- Want to encourage applications from new communities
 - While still supporting the UK’s established code base
 - Investigating ways to ensure the submission process is appropriate for both new communities and established codes
- Aim to support and monitor early career researchers
 - Throughout the lifetime of the ARCHER service





EPSRC

NERC SCIENCE OF THE ENVIRONMENT

CRAY
THE SUPERCOMPUTER COMPANY

| epcc |



<http://www.archer.ac.uk>
support@archer.ac.uk



CSE Strategy

Alan D Simpson, *ARCHER CSE Director*

EPSRC

NERC SCIENCE OF THE ENVIRONMENT



Core Elements of ARCHER CSE

- *Supporting UK academic researchers to perform world-leading numerical simulations and experiments*
- Training around UK
- Answering in-depth queries
- Documentation and website
- Running eCSE programme
- Novel engagement with users
 - Consortium Contacts
 - Virtual Tutorials
 - Technical Forum
 - Annual prizes for best research paper and best scientific image



Additional Benefits

- Annual themed workshops
- Produce a MOOC (Massive Online Open Course)
- Support and encourage early career researchers
- Industrial outreach and collaboration
- Women in HPC
- Showcase the scientific output and impact, e.g., via a publication database and case study library
- Training the trainer
- Outreach, e.g., to science festivals
- Develop and sustain codes and communities from new areas
- Strengthening links within HPC ecosystem



Strategic Questions

- Prioritisation of additional benefits
 - What activities are (or are not) valued?
 - How should ARCHER Training interact with CDTs?
 - Training the trainers to make this sustainable
 - Target audiences for MOOC and Outreach?
 - General public, students, early career researchers, ...
 - How should the eCSE programme balance the development of new areas with improving the high quality existing code base?
 - Separate calls, directed funding streams within a call, ...
 - Focus for annual workshops?
 - Big data, energy, environment, ...
 - Industrial v. academic usage?
- ***EPCC want to ensure that CSE effort is targeted at areas that match Research Councils' and Users' priorities***

